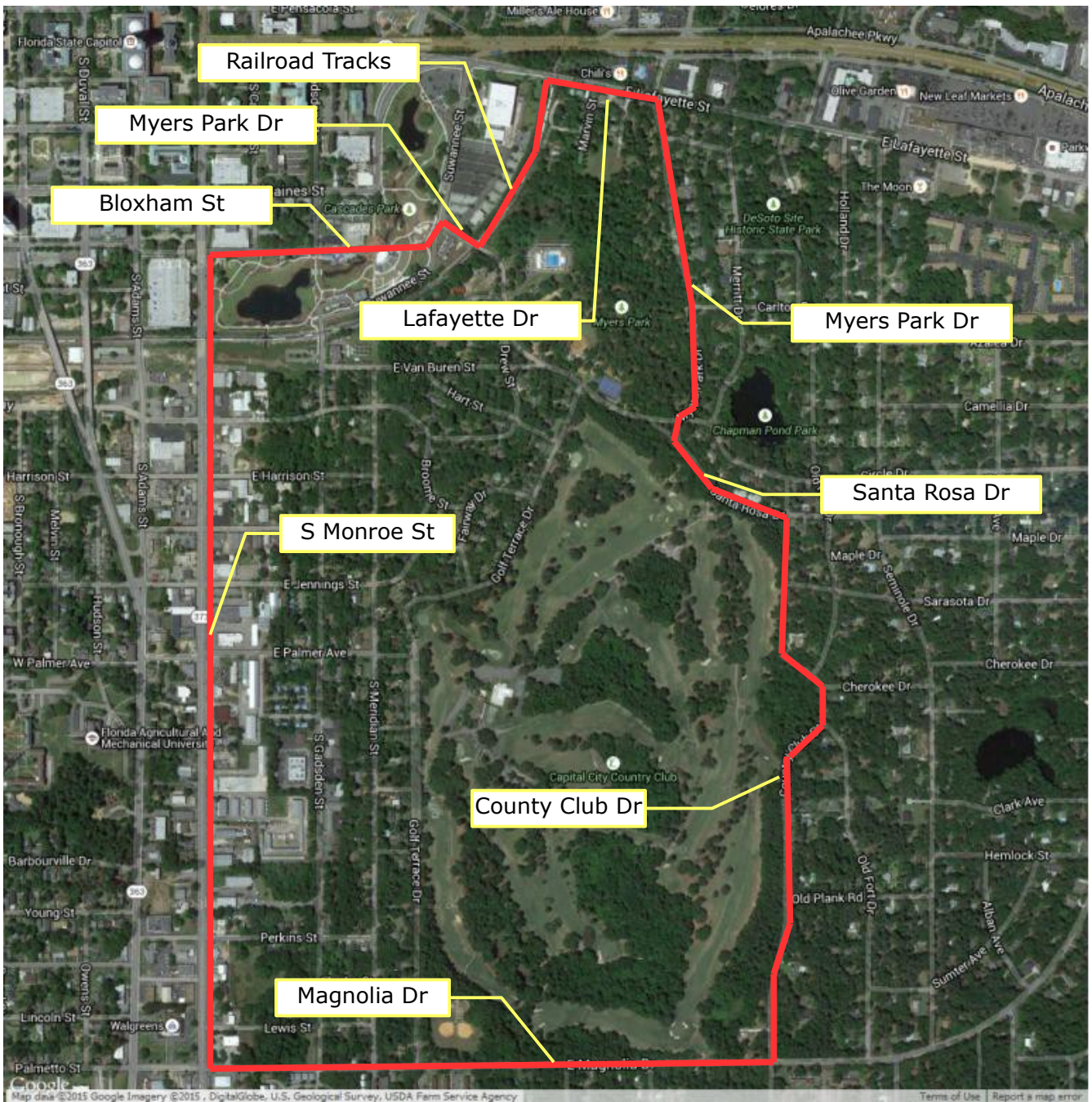


Map of MPNA Boundary



The boundaries of the Association are as follows. The Association is bounded on the west by South Monroe Street, on the south by Magnolia Drive, on the east by County Club Drive, Santa Rosa Drive and the eastern portion of Myers Park Drive, and on the north by Bloxham Street, part of the western portion of Myers Park Drive, the railroad tracks, and Lafayette Street (Old St Augustine Road). (from Constitution and By-Laws, January 10, 1996)